

RIBA *Journal*

'Architecture's magazine' **The Observer**

October 1997 £4

How was it for you?

Vicky Richardson asked three regional award judges about selecting this year's winners, which we list, and Gregor Claude quizzed users about the award-winning buildings.

The lay assessor (West Midlands region)



Claire Tomalin, writer

We had wonderful weather so it was a bit like a holiday. I arrived the night before and stayed in a hotel where the waiters sized you up and then put you in the corner behind a column.

I was cautious that I would

bring too many non-architectural comments to bear, but I was encouraged to say what I thought. The way the buildings worked was very important to me. The architects concentrated on the structure.

We travelled between buildings by car and it was very hot - I must confess I fell asleep a couple of times.

I didn't agree with the final decisions and I was a bit puzzled

about the judging - I thought we were going to arrive at a joint decision. I felt very strongly about one exclusion where the architects pointed out minor faults in the finish, which I thought could be blamed on the contractor.

I suppose disagreements are the nature of the jury system and, after all, I am a lay person and my way of looking at things is uninformed.

The regional representative (Wales)



Maureen Kelly Owen, architect and past-president of the Royal Society of Architects in Wales

We only visited four buildings because many had been seen by a preliminary panel. We met up

at 8.30am and were unusual in being an all-women team. We went round in the car at legal but good speeds. A recky had already been done by our regional director, so we knew exactly where we were going.

We had to imagine some buildings through rose-tinted spectacles because of the terrible weather. We had coffee at most places but, unfortunately, weren't bribed with

cream teas.

At the end of the day, the chair circulated her comments and it was up to us to agree or disagree.

It was an interesting day because it underlined the importance of experiencing architecture, not just looking at photographs. I found the whole day extremely enjoyable, and I think it's essential to have regional awards.

The chairman (North West region)



John Spencely, chairman, Reiach & Hall

We had to visit 12 buildings in two days, so I flew down to Manchester the night before.

At about 9am we had a quick coffee at the station, then all piled into the regional director's

husband's car. We were more or less on time for all our appointments and there was always someone to show us round.

The architects aren't allowed to be there, but you meet a representative of the client. Sometimes it's difficult to get round quickly enough without being impolite.

Quite often they harp on about things that are quite irrelevant - like whether they

have a synthesizer the size of the Mir space station.

Each building gets about 40 minutes. Sometimes it's clear that the building is hellish. What can extend the visit more is when you get into a debate then and there.

We went out for a decent dinner, but didn't talk much about the buildings. You don't get paid but you do get your expenses reimbursed.

Yorkshire

Roundhouse Huddersfield.
Architect: One Seventeen AD
Tesco superstore (3) Sheffield.
Architect: Michael Aukett Architects
Knavesmire Stand York Race Course. Architect: The Goddard Wybor Practice

North West

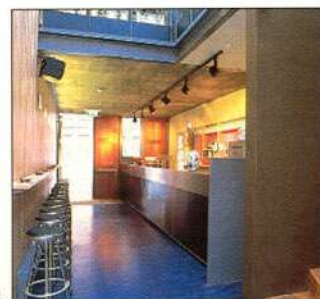
Garden gazebo Alderley Edge.
Architect: Anthony Grimshaw Associates
Rococomodo (1) Liverpool.
Architect: SHED Architects
Peter Jost Enterprise Centre John Moores University, Liverpool.
Architect: Austin-Smith:Lord
Homes for Change Hulme.
Architect: Mills Beaumont Leavey Channon (pictured on front cover)
Birkenhead bus station Birkenhead. Architect: CASS Associates

West Midlands

Cathedral library Hereford.
Architect: Whitfield Partners
John Sandy Visitor Centre (2) Featherstone prison, Wolverhampton. Architect: Feilden Clegg Architects

Eastern

Kings Lynn Corn Exchange.
Architect: Levitt Bernstein Associates
London Underground Stratford Market depot London E15.
Architect: Chris Wilkinson Architects
Burrells Field Trinity College, Cambridge. Architect: MacCormac Jamieson Prichard



South West

- Chiddenbrook pharmacy (4)**
Credton, Devon. Architect: Smith Roberts Associates
- New school extension (5)**
Exminster. Architect: Stan Bolt
- Jersey College for Girls (6)**
St Helier. Architect: Architecture PLB

South East

- Research building Philips**
Research Laboratories, Redhill.
Architect: AD Architects
- Boundary House**
Tunbridge Wells. Architect: Michael Winter
- Kempe Centre (7)** Wye College, Kent. Architect: Nicholas Hare Architects
- Hillview House (8)** Gravesend, Kent. Architect: Michael Kilgour & Associate

Southern

- Paul Hamlyn Learning Resource Centre (9)** Thames Valley University, Slough. Architect: Richard Rogers Partnership
- Bedales School theatre (10)** Hampshire. Architect: Feilden Clegg
- Boathouse (11)** Streatley on Thames, Berkshire. Architect: Brookes Stacey Randall Fursdon

London

- Lords cricket ground shop (12)** NW8. Architect: David Morley
- Sculpture Bay No. 1** Elvaston Place, SW7. Architect: Stickland Coombe Architecture

(Continued on p21)

Tesco superstore, Sheffield Michael Aukett Architects

'The front is all glass and you can see inside through the whole store. You get a calming sensation, even when the store is busy. The frozen foods section has rotating penguins and the dairy section has cows with swishing tails – kids love it.'

Andrew Palmer (34), fresh foods trading manager



3



Stylish shed: Michael Aukett's Sheffield Tesco, above, shows there is an alternative to clocktower supermarkets, left.

Chiddenbrook pharmacy, Devon Smith Roberts Associates

'The spire on the end is a bit strange, but it's convenient because it's right next to the surgery. Before, I had to go all the way to the high street. It's different. It's green. It's unobtrusive.'

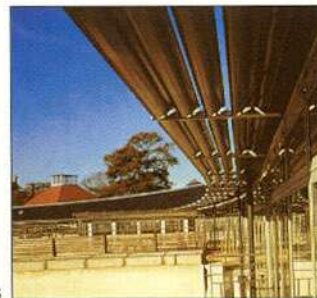
David Rex Fisher (66), customer



4



Feeling better: Smith Roberts' pharmacy, above, helps the medicine go down more easily than via the usual high street route, left.



9

10

11

12