

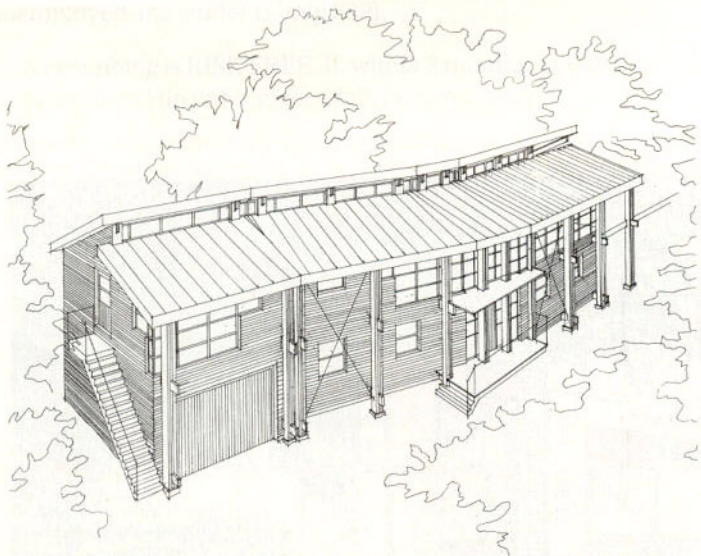
AN EMAP BUSINESS PUBLICATION

12 JANUARY 1995 | £ 1.45

# the architect's journal



# project review: houses



---

## MICHAEL WINTER

This low-energy house for the architect's own occupation is designed for a woodland site sandwiched between

a railway, public footpath and cricket ground. The house makes the minimum environmental impact (it is raised up on short-bored piles and

squeezed into an existing clearing) and is built entirely of 'green' materials. Completion is expected in September 1995.